

Page # 1



Step 1. Always start the cart in this position when working on it.

The white plastic is the contact side is always on the bottom left.

Step 2. What you will need:

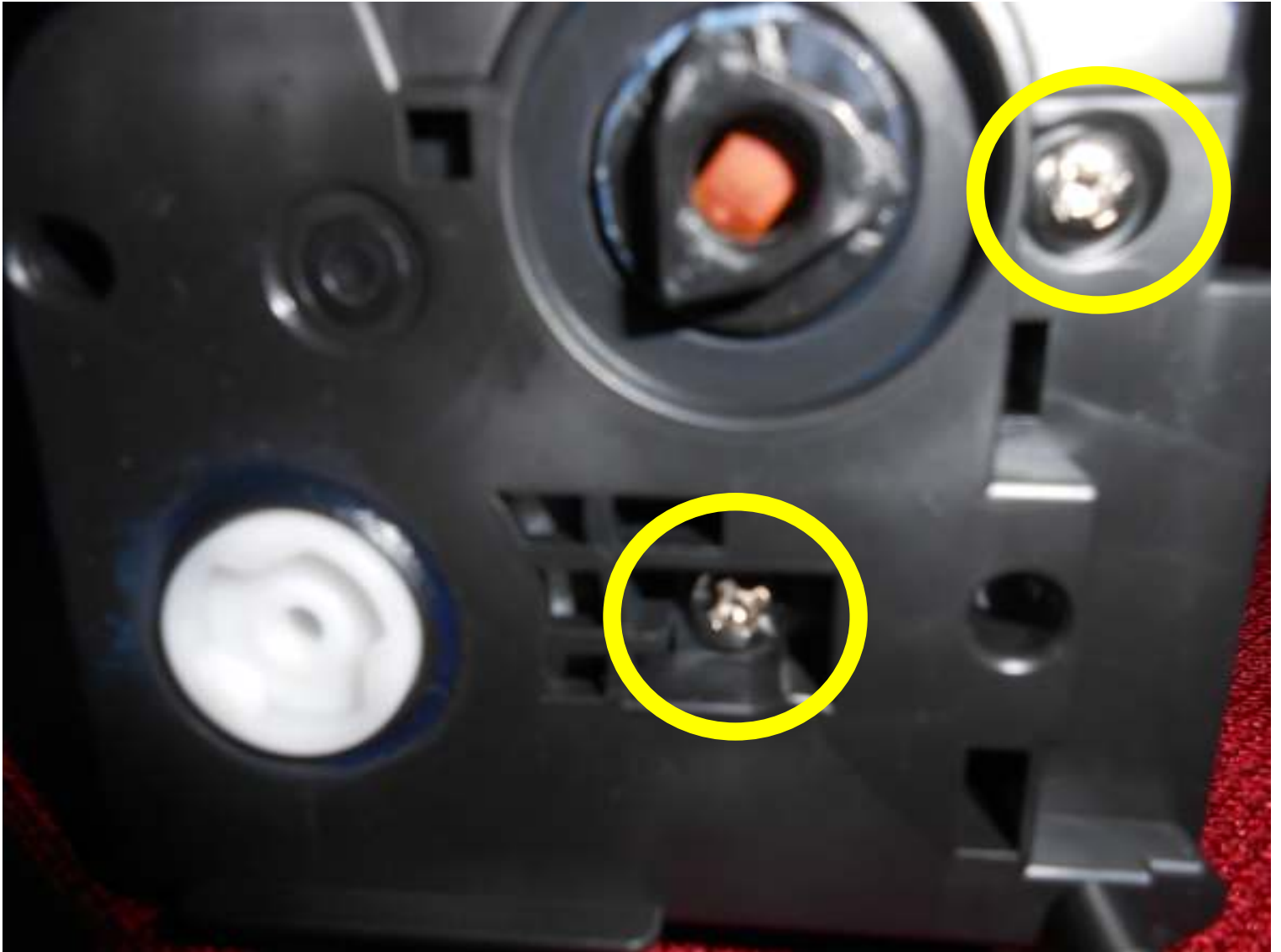
A towel (for the table), 2 cleaning rags, philips head #2 screwdriver, and acetone.

This takes 5 minutes and solves almost every problem you can run into.

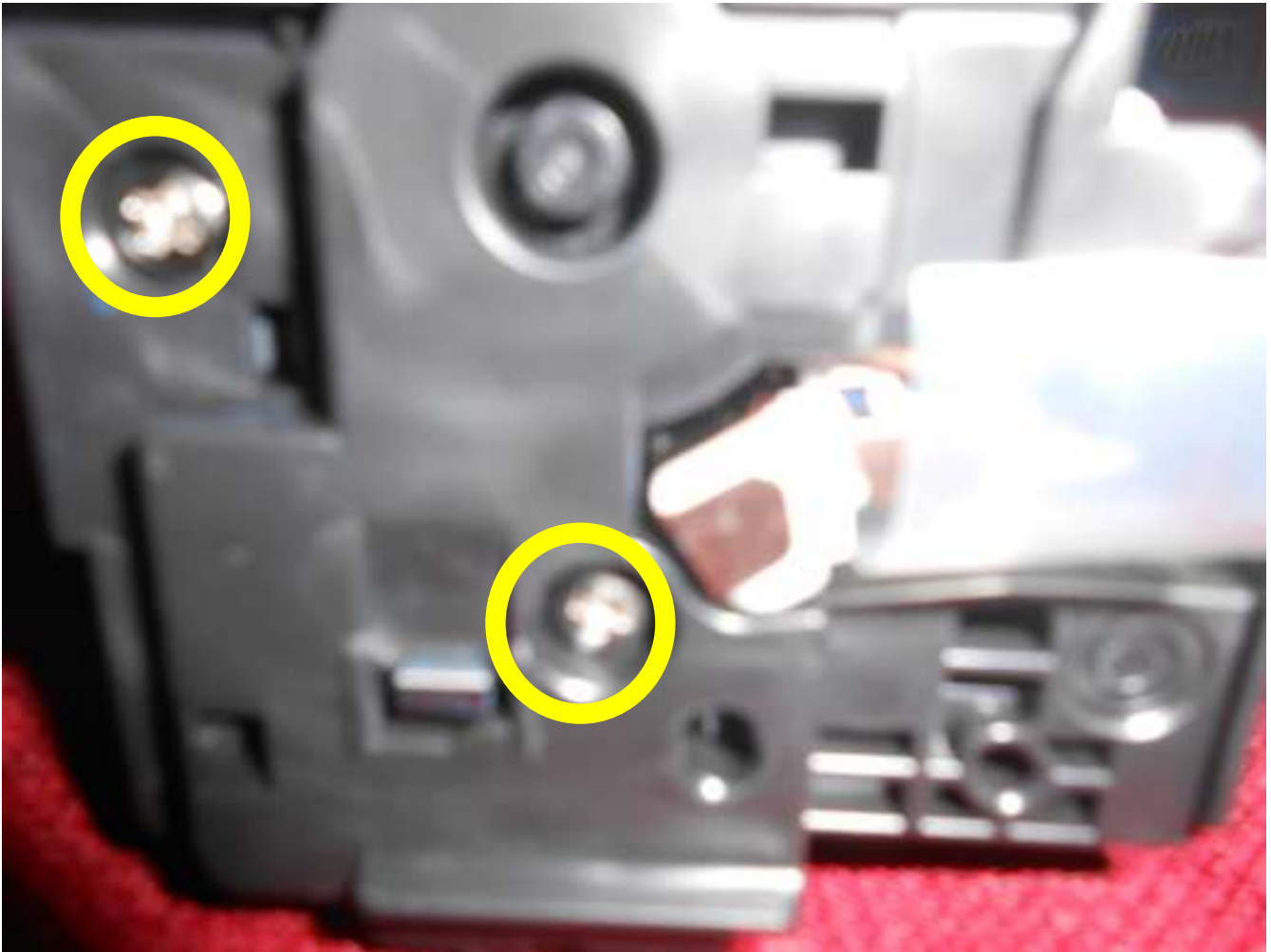
Take your time it does work and is worth knowing how to do.

These instructions will go over everything so lets get started.

Page #2



This is the right side called an end cap.
Take these 2 screws out.
Turn the cart to see the other side.



This is the right end cap, please take the 2 screws out.

Page #4

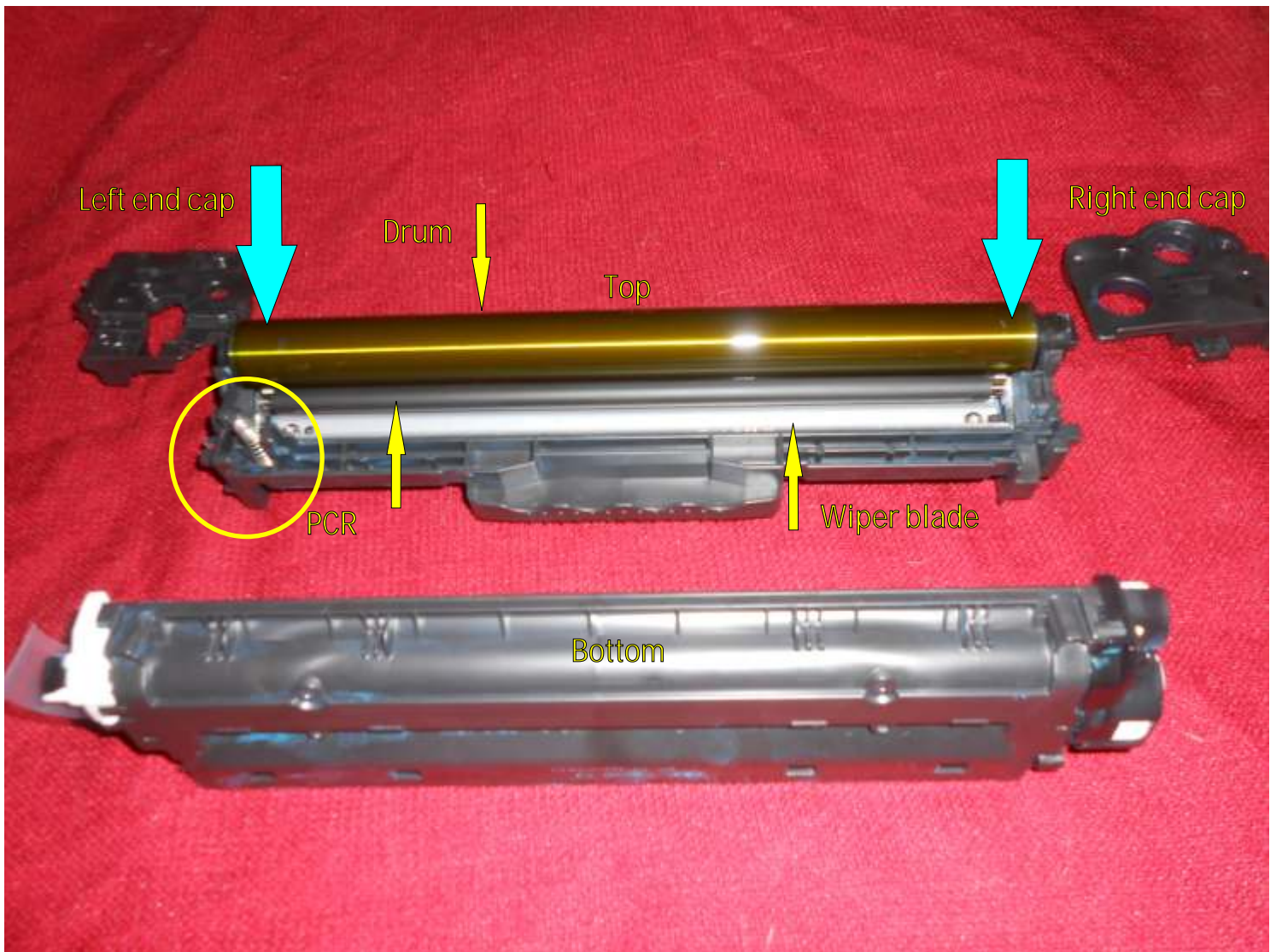


Please read Pages 4 and 5 before doing anything.

Now that the screws are out of the way we want to separate the 2 halves.
To do this you simply place your left hand on the top and bottom as shown.
Hold the cart and with your right hand remove the right end cap
Now while holding the cart change hands and remove the left end cap.

Remember to wait until you see page 5 before doing this.

Page #5



This is how you want your table to look. I'll explain.

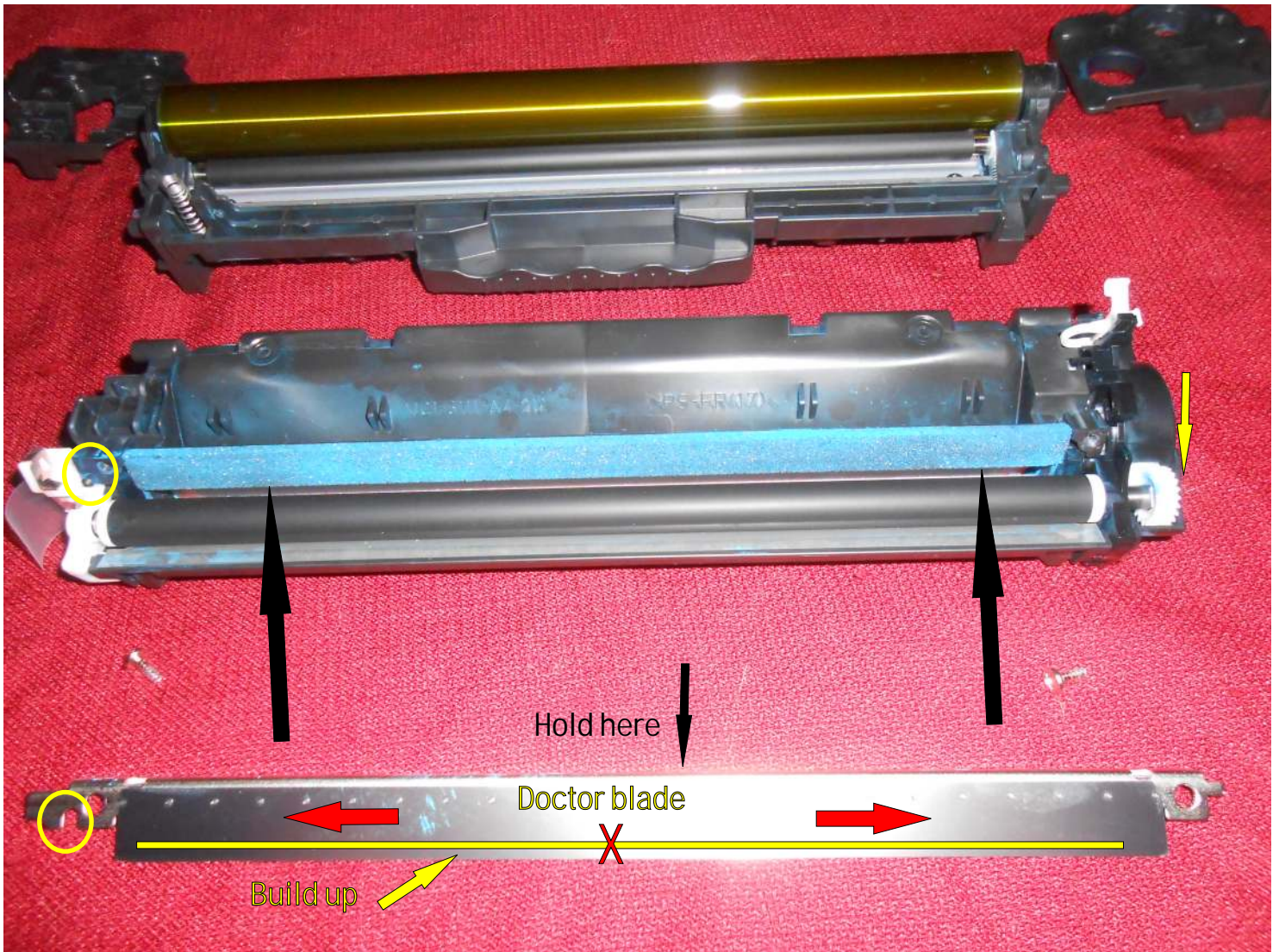
The 2 blue arrows are pointing to the spot where you will put your thumbs to hold the drum in place while you separate the halves. If you see the yellow circle you will see a big spring. If you do not hold the halves together and if you do not hold the drum to the first half, then the spring will cause the 2 halves to separate and the drum might fall. You will see that the Top has been rolled back to lay flat with the drum sitting on the top' Now please do it.

Page #6



Now that is finished we can role the bottom towards us (as shown). The picture is shown with Screws already removed. I promise these are the last screws you have to remove. The doctor blade (as shown) is what we are going to be cleaning. To remove it simply lift up by the circles and remove and sit it down.

Page #7

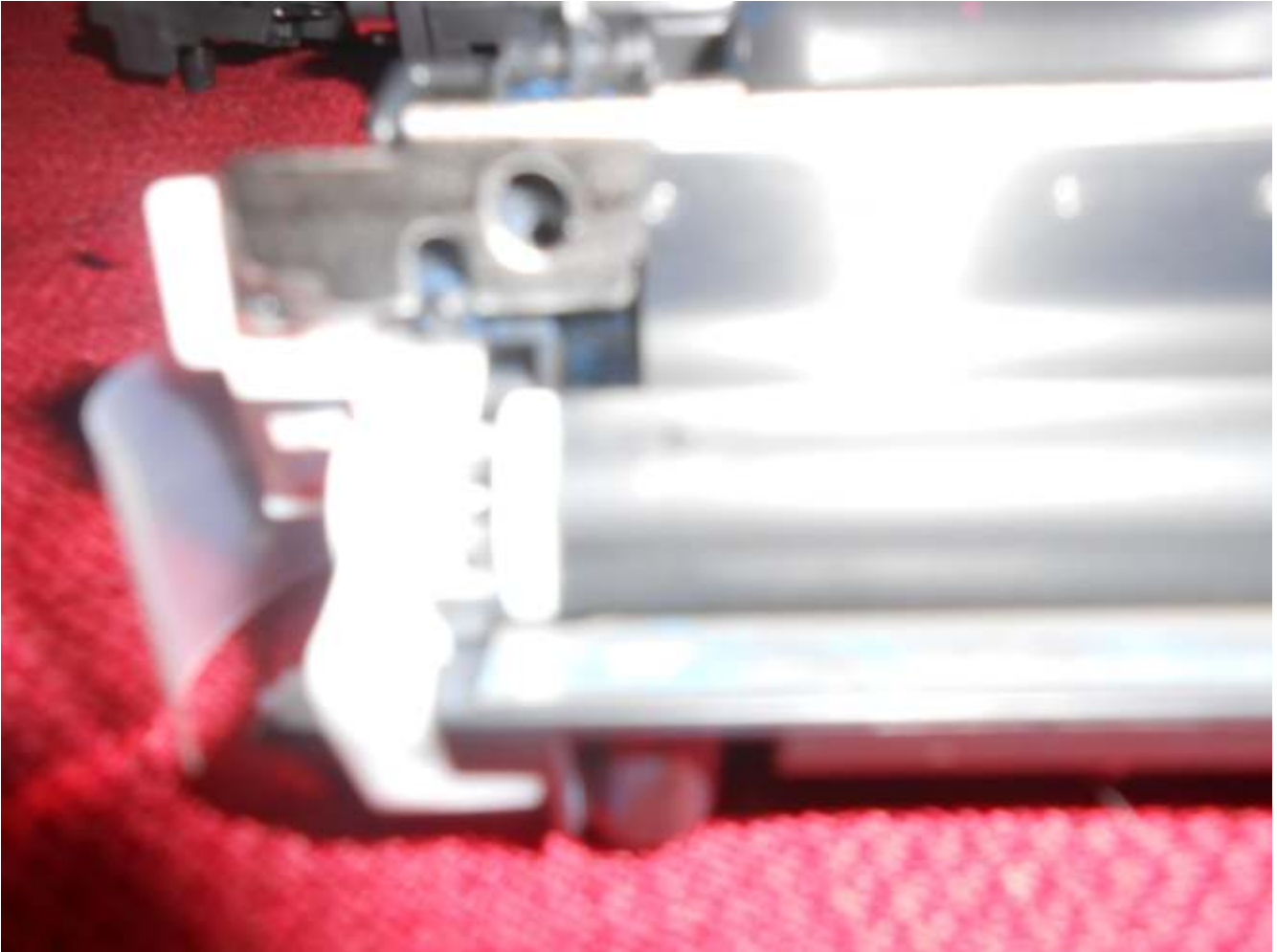


Almost done. This is what we clean. Pick it up (note hold here). Take a clean rag and wipe the toner off. Please start at the x and go left then right. The thing you want to watch is not bend the blade by catching the corners. Clean left then start in the middle and clean right. After this repeat but use acetone where the yellow line is to get the problem gone. Look and make sure there is nothing on the doctor blade at all. All done. Now to put it back together.

We have these spaced already so all you have to do is put the doctor blade back on. Notice the yellow circles. The way to do this is to angle the sharp edge of the blade to where it goes in between the foam and the Dev. roller. What you do not want to do is scratch into the Dev. roller. Yellow circles again. It is done so you can hang the blade into place. Look at page 8. Now put the screws back

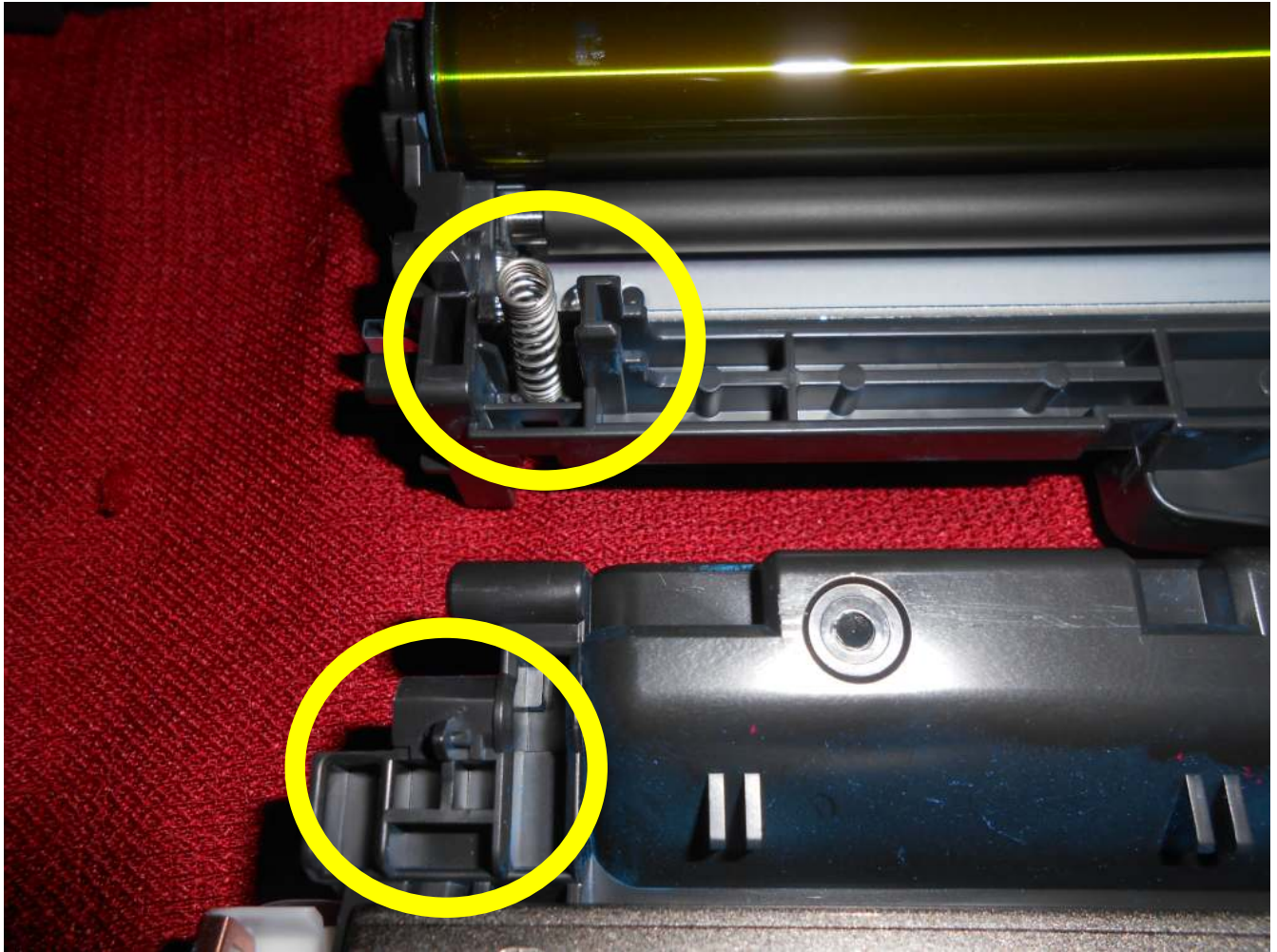
in but do not tighten. After you have started the screws press down on the top of the doctor blade above the screw and tighten one side at a time. Now pick up the half and tilt it and make sure it does not leak. Now put it back down. See the small gear on the right side. Pull the gear towards you and watch the toner cover the Dev. roller. If it looks good with no lines your print will be perfect.

Page #8



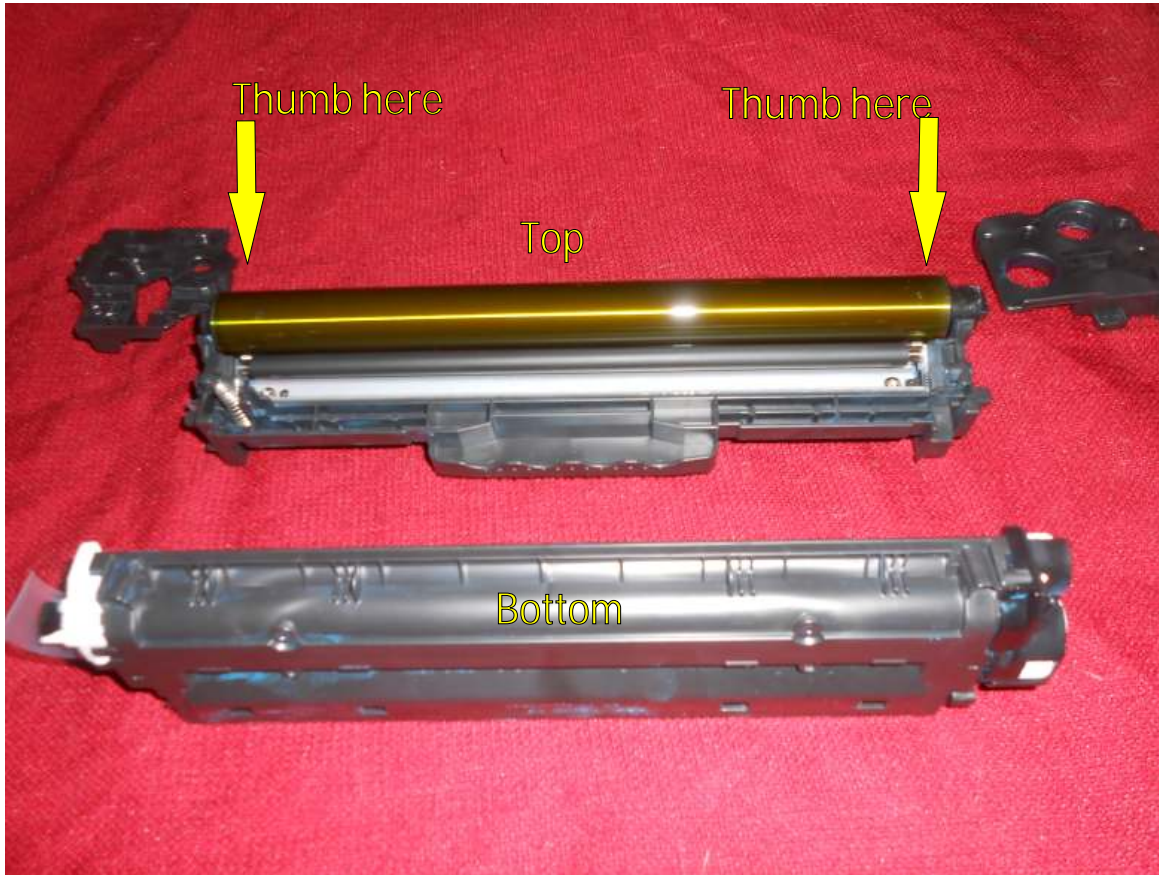
Shows you how it looks when putting the blade on.

Page #9



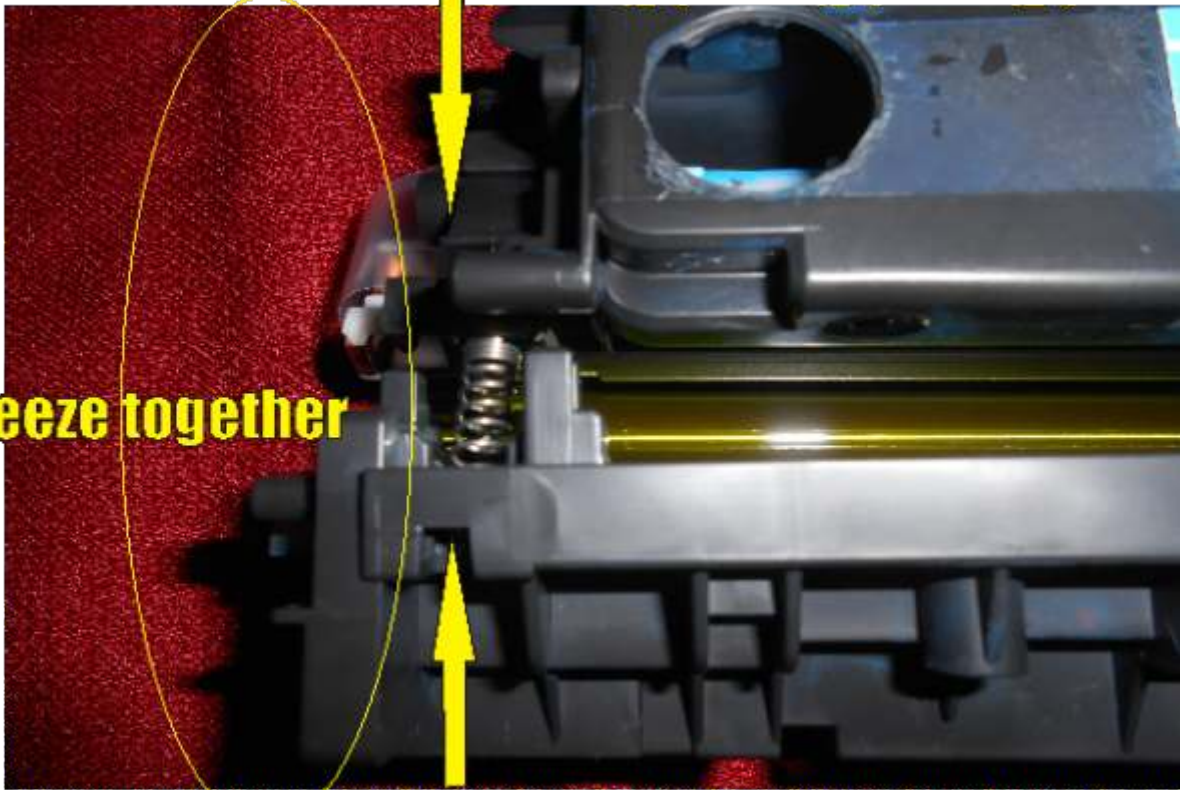
Now for the putting the 2 halves back together. Yellow circles again. The head of the big spring goes on the tiny triangle. Now we reverse what we already have done.

Page #10

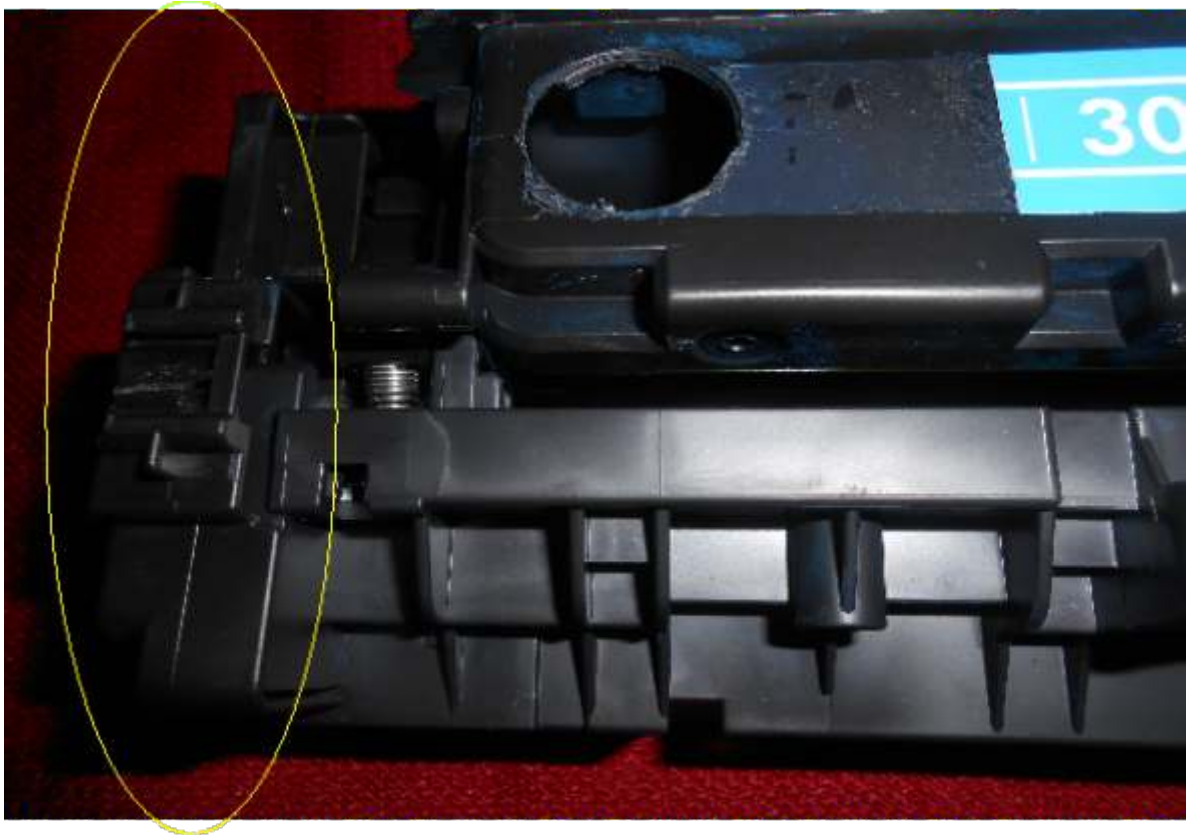


Roll the bottom half back up. Take note of the big spring and where it goes. Grab the top half and hold the drum in place using your thumbs and roll it forward. Line up the big spring with the triangle and move the two halves together. Now hold with left hand like we did when we took it apart. Now grab the left end cap and slide it on. Sometimes you have to press down on the drum and slide it in. While holding the cart flip it around and hold it with your right hand. Now slide the left end cap on. Look at the next page to see how it goes on.

Squeeze together



Left end cap off



Left end cap on

Put the end cap screws back in

Page #12

Extra Example



It should look like this before putting the end caps back on but you will be holding it together. It should look like this before putting the end caps back on but you will be holding it together.



The first thing you do after you take the cart apart and before putting back in the printer is to rotate the drum to clean it. Push the drum away from you until the drum is clean and moving freely. You can do this also if you ever get dots or a mist of toner on the page.